



Elson Infants Fundraising Friends (PTFA)

WHAT DOES PTFA MEAN?

PTFA = Parent Teacher Friends Association

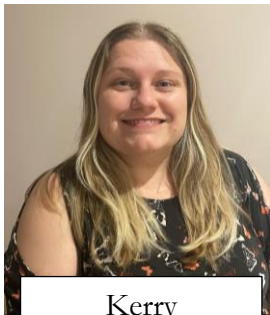
This means all Parents/guardians/carers of pupils attending the school, teaching staff, non-teaching staff, family members of past and present pupils and any persons over the age of 18 wishing to offer appropriate support or help to the school and who is accepted by the committee as a member.

WHO ARE WE?

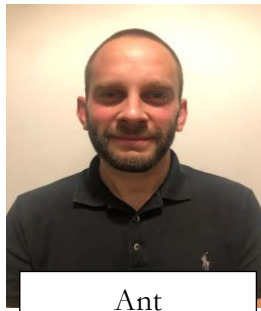
We are a group of enthusiastic parents who would like to raise important funds to advance the school education and enrich the pupils time in the school by:

Developing effective relationships between the staff, parents and others associated with the school.

Engaging in activities, providing facilities or equipment which support the school and pupils. Weather you work full time jobs, have small children or a stay at home parent, everyone has skills that will be valued.



Kerry
Chair



Ant
Vice Chair



Kirsty
Treasurer



Jennie
Secretary



Matt
Committee
Member &
Governor



Mary
Committee
Member

WHAT DO WE DO?

We run various activities and events throughout the year to raise funds such as Discos, Summer Fairs, Christmas Fair, Easter Trails, Local Small Business Fairs, Mother's/Father's Day activities/presents and many more.

Money raised so far has been used towards things like the Year 2 Leavers day, new curriculum books, the new and exciting playground, new bikes/trikes/scooters/helmets and much more.

We also work with the local community. We have been lucky enough that we were able to get paint/paint supplies donated to the school for us to redecorate the corridors to give them a bigger and brighter feel.

WAYS YOU CAN FUNDRAISE FROM HOME



Did you know that whenever you buy anything online – from your weekly shop to your annual holiday – you could be raising free donations for Elson Infants Fundraising Friends with easyfundraising?

There are over 4,000 shops and sites on board ready to make a donation – including eBay, Argos, John Lewis, ASOS, Booking.com and M&S – and it won't cost you a penny extra to help us raise funds.

All you need to do is:

1. [CLICK HERE](#) to go to [Easyfundraising](#) and join for free.
2. Every time you shop online, go to Easyfundraising first to find the site you want and start shopping.
3. After you've checked out, the retailer will make a donation to Elson Infants Fundraising Friends at no extra cost to you whatsoever!

There are no catches or hidden charges and Elson Infants Fundraising Friends will be very grateful for your donations.



Stamptastic is the fastest way to name your kids belongings. Step away from the ironing board and put that needle and thread away. Stamp instead with Stamptastic. Stamptastic's magic ink withstands 50 washes on care labels without fading. Customise your Personalised Name Stamps online by [CLICKING HERE](#) and earn commission for Elson Infants Fundraising Friends.



Clear out your closet and we can raise money for every kilo.
We have a textile recycling bin located in the car park.

We are so grateful for the support we receive from the parents/guardians and the local community.

If you would like to help or have any fundraising ideas please email us –
elsoninfantsff@gmail.com



Elson Infants Fundraising Friends

Does the thought of joining the PTFA break you out in a sweat!?!
Feel like you can't commit alllll that time but still want to help in some way?

LAUNCHING our brand new...

EIFF HELPERS GROUP

Think of it as PTFA Lite 😊

If you'd like to help EIFF as and when you have the time please email - elsoninfantsff@gmail.com

We'll add you to our list of eager beavers and keen beans and when it's time to summon the troops we'll email you to ask for help.

If you can, brilliant! If you can't, we'll catch you next time.

Simples!